

# “NO ONE CAN BE LEFT BEHIND” SYSTEMIC SUPPORT OF STUDENTS WITH SPECIAL NEEDS AT ELTE UNIVERSITY

Mrs. Krisztina Kovács, Head of Office for Supporting Students with Special Needs (SHÜTI), disability coordinator - ELTE University

[kovacs.krisztina@kancellaria.elte.hu](mailto:kovacs.krisztina@kancellaria.elte.hu)

Charm-EU Days

November 23rd, 2020



SHÜTI

# Equal opportunity in higher education?



*„Injustice anywhere is a threat to justice everywhere.”*

(letter of Martin Luther King Jr., from Birmingham jail - April

16,1963)

# How far have we reached in Hungary?



We have good legislation

- ▣ UN Convention on the Rights of Persons with Disabilities (2006)
- ▣ Equal Opportunity for Persons with Disability Act (1998)
- ▣ Higher Education Act, including special regulations for SwD (2011, 2015)

# Higher Education Act (2011) and its Enacting Clause (2015)

- Providing equal opportunities and equal access
- The lecturer/teacher has to take into consideration the students' special needs
- There have to be institutional and faculty disability coordinators pointed out
- Student has right to receive provision according to his/her condition and disability
- Any student can get state financed higher education on all level maximum of 12 semesters – students with disability can get 4 extra semesters.
- Students with disability have to be provided education and evaluation/examination procedure that is suitable for his/her special needs. If it is justified, he/she can be released from studying some subjects or parts of a subject. This release can only be provided if it is based on the special needs of the students and it can not lead to the exemption of those subjects which are basic requirements for the given field of study/profession.
- Practical subjects can be fulfilled in different ways or can be substituted by theoretical subjects
- Oral exams can be fulfilled written and vica versa
- Release from the obligatory state language examination (part or level)
- Using assistive technology and special equipment during the study and exams
- More preparation time during the exams
- Asking for personal assistants and note-takers

# Other regulations

- We have rules for admission and reasonable accommodations for applicants with disabilities
  - ▣ Extra credits for admitting
  - ▣ If there is an entry requirement, the examination form should be adapted to the special needs, extra time, etc.
- We have extra financial normative support from the Ministry of Innovation and Technologies— 150.000,- HUF (equivalent cca. 400 Euro)/year/student

# Eligibility

Students with:

- Visual impairment
- Hearing impairment
- Physical disability
- Speech impairment
- Learning disability:
  - ▣ Dyslexia
  - ▣ Dysgraphia
  - ▣ Dyscalculia
  - ▣ ADHD
  - ▣ Behaviour regulation disorder
- Autism-spectrum disorder
- Multiple impairment

# Background at ELTE

- ELTE University has been providing service for SwD since 2004
- Disability coordinators were appointed in all faculties without training, without special knowledge on disability (exception: Faculty of Special Education) and without networking
- 2010 – Ministry of Education has asked ELTE to nominate a disability coordinator for the whole university with special ed. diploma
- The faculty and the university level coordinators formulated a team worked out the registration procedure on a common ground have established a special equipment rent service, etc.
- The service of the different faculties was still not equal in quantity and quality even if the number of SwD has a big growth year by year

# Time for change

- 2015 september – Office for Supporting Students with Special Needs (Hungarian acronym: SHÜTI) was established under the University Service Directorate
- Members - 13 faculty and dormitory disability coordinators + 8 professionals:
  - 5 special ed. teachers specialized in different disabilities
  - 1 ICT professional specialized in accessibility
  - 2 social care professionals



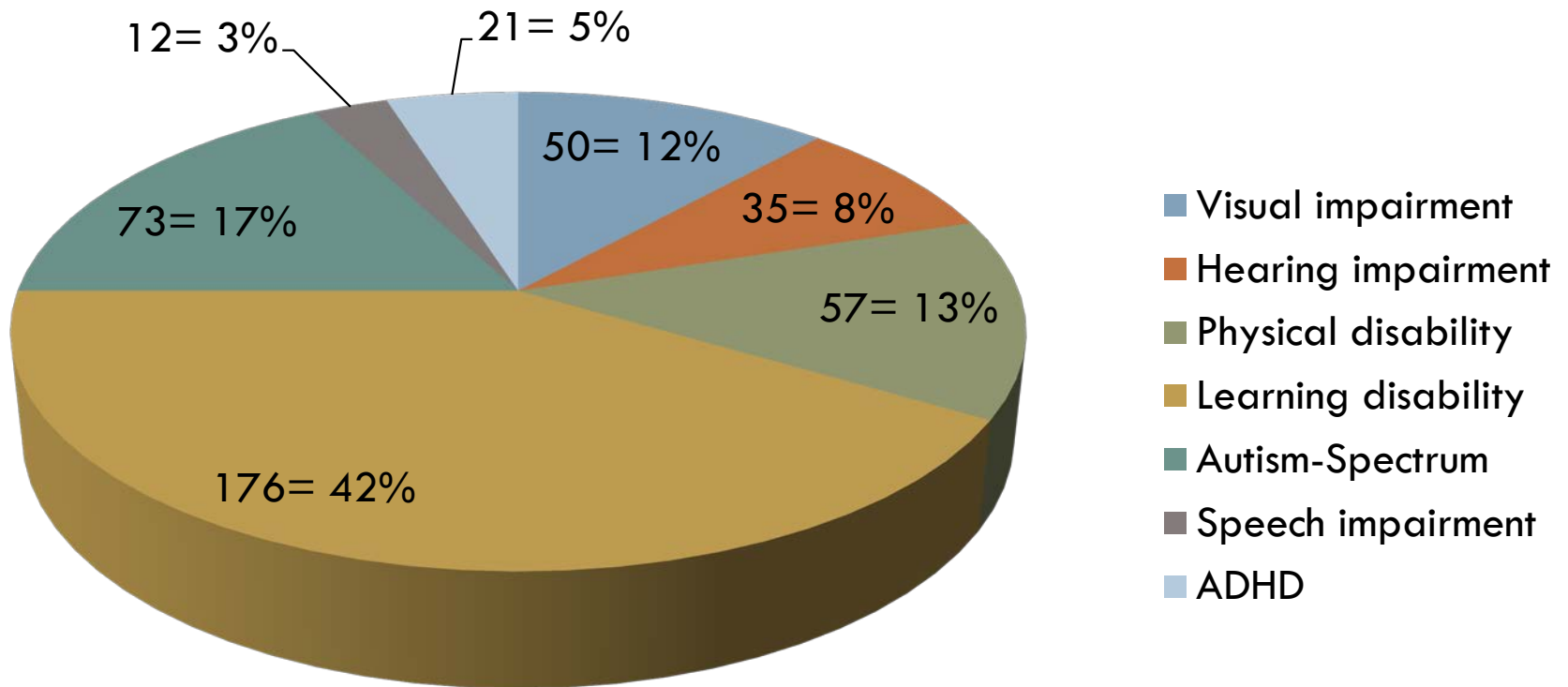
# Aims of SHÜTI

- ensure equal opportunity, accessibility and support
- improving awareness
- providing information on any disability related issue and universal design
- forming the inclusive policy of the University
- facilitating self-empowerment of students with special needs
- give platform to students with disability in all of the programs we organize for the university students, academic and administrative staff, to the public or to the community of people with disability.
- we aim to reach full participation of the students with special needs with the motto: „Nothing about us without us!”

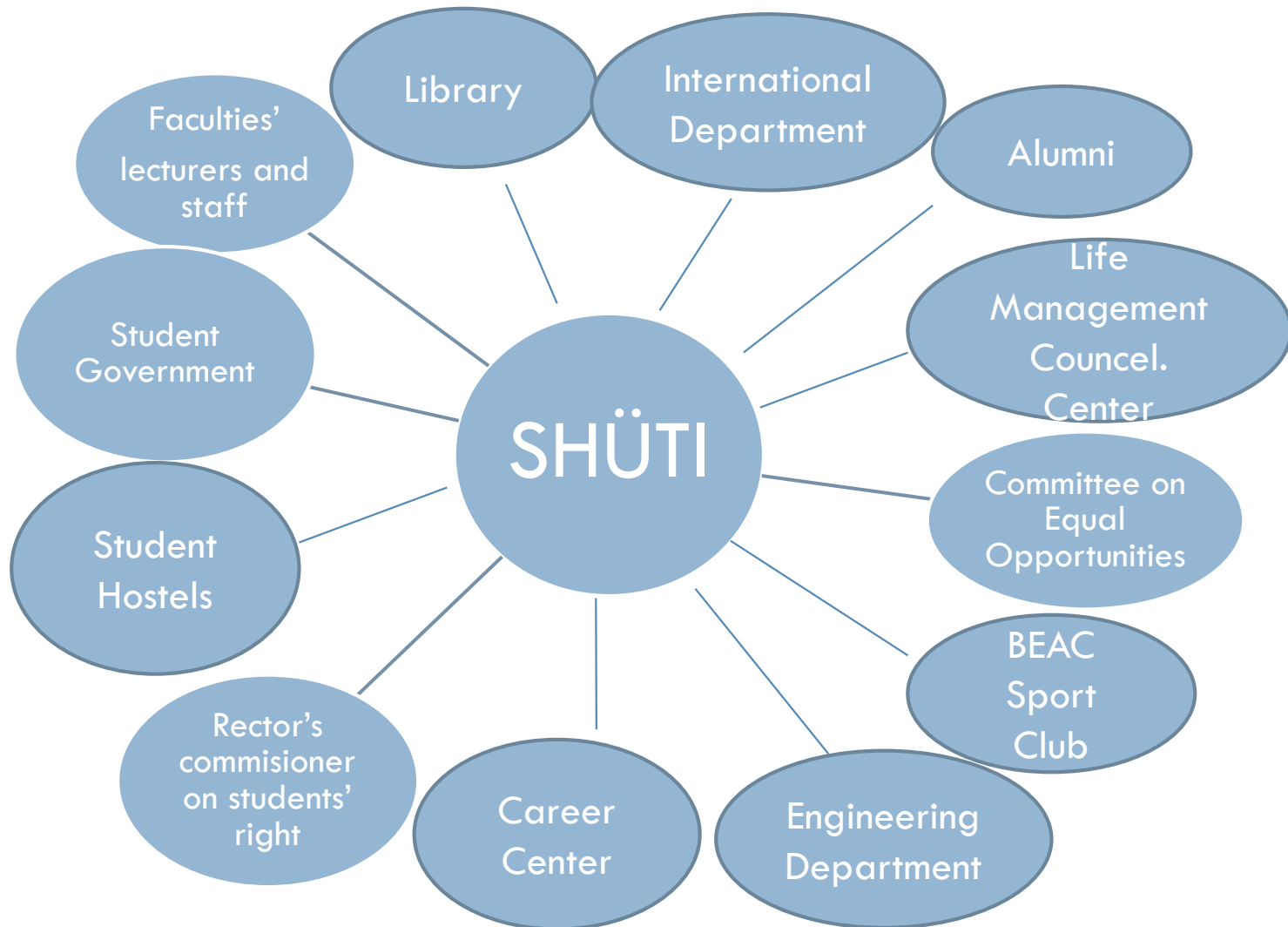
# Some Statistics

Number of SwD in autumn semester of 2020/21

N= 424 = 1,3% of ELTE students



# Inner network of SHÜTI



# Cooperation with Stakeholders

- Unions and associations of persons with disabilities ( e.g. MVGYOSZ; SINOSZ; MEOSZ; Demoszthenesz Egyesület; AOSZ)
- Foundations supporting people with disabilities (e.g. Kézenfogva; Munkában Maradásért; Salva Vita; NFSZK; etc.)
- Different firms, companies and their associations that provide labour market for our students (e.g. Hungarian Business Leaders' Forum; MOL; IBM Hungary; etc.)
- Other universities' disability coordinators (e.g. University of Debrecen, Szeged, Pécs, Miskolc, Nyíregyháza, Corvinus, SOTE, BME, etc.)
- Organizations providing rehabilitation (e.g. VGYKE; VÁI-VERCS; BULÁKE; MEREK; HÍD; etc.)
- Psycho-therapists (whom we have a contract to serve our students in need)

# Services of SHÜTI I.

- Adaptation of the learning material – digitalization; tactile graphics; verbal description of the pictures and tables;
- Database on the adapted material, sent to the Central Library
- Orientation and mobility training: teaching routes from home or student hostel to the Faculty; inside and outside the buildings
- Individual training in the use of NEPTUN (electric learning system)
- Recruitment, training and supervising personal assistants – students are payed, having a contract
- ICT counselling
- Teaching the use of libraries
- Training in learning techniques
- Councelling on activities of daily living

# Services of SHÜTI II.



- Autism-specific therapies
- Hiring accessible minibus/taxi cheque
- Speech therapy
- Providing social caregiver for everyday activities/personalhygiene
- Information providing to the lecturer staff, to parents, to the students
  - ▣ Guidebooks for teachers and staff (on-line and printed)
  - ▣ Website <https://www.elte.hu/eselyegyenloseg> <https://www.elte.hu/en/equal>
  - ▣ Facebook
  - ▣ Closed e-mail list
- Sensibility trainings for any department/institute/unit
- Career counselling
- Accessibility counselling
- Counselling and support for Erasmus students with disability – outgoing and incoming

# Group activities of SHÜTI

- Asperger group
- English speaking group
- Career management course (with credits)
- Game Club
- Learning techniques course
- Goal ball course –inclusive sport course for credits
- Paraswimming course
- Inclusive Sport day (in September)
- Open Day for secondary schools (in February)
- “Day Zero” orientation day for the freshmen (in August)

# International programs

- ExchangeAbility –fostering mobility of SwD
- MapAbility – accessibility of the European universities
- International Swimming Competition – Poznan
- EUSA (European University Sport Association) Championship in 2016 in Rijeka - paraswimming
- Erasmus Staff week – org. Disability Workshop (3 times)
- European Blind Union – ELTE University: State of the Art Report on Accessibility of Exchange Programs for Students with Visual Impairment – 2015; 2017
- Visiting European universities in the frame of Erasmus+/Staff mobility
- Participating and presentation in international conferences



# Thank you for your attention!

