



Funded by the Horizon 2020 programme of the EU
Grant agreement No 101035819



Facilitating new research collaboration and links between ENLIGHT universities through **thematic focus groups**

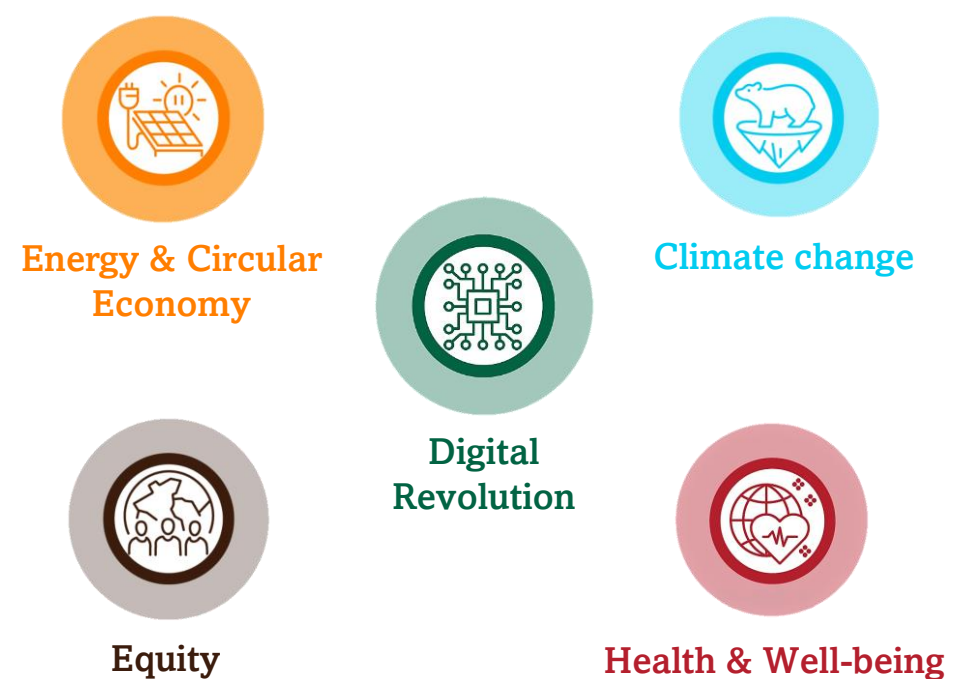
Aim

- community building and creation of strong research ties among ENLIGHT partners
- link researchers with focus on specific research domains
- identify potential research challenges as basis for future collaborations
- explore funding opportunities for joint applications with help of the support offices
- strive for successful ENLIGHT grant applications (min. 3 ENLIGHT partners involved)

Composition

- 1 focus group (FG) per ENLIGHT flagship area
- each FG includes 3 members per partner university (PU):
 - . 1 senior researcher
 - . 1 junior researcher
 - . 1 research support officer (RMA)
 } jointly represent the FG's research field within their university's research community

5 flagship areas



Clustering of partner focus / interest & HE calls

Methodology

- Researchers take the lead and decide course of the FG
- Every FG has a digital environment (SharePoint) + online meeting space (MS Teams)
- Individual participant profiles
- Overview of interest and expertise per PU
- Overview of linked known calls

PU's indicate what topics they are interested in

spreadsheet of common interest and opportunities for joint collaborations

topic with high potential form a subgroup where specialist from all PU's:
- present their research
- share knowledge, datasets, calls, etc.
- work on project proposal

Challenges

- Researchers are unfamiliar with representing their institutional research community
- Junior (early career) researchers are harder to involve

Good practice

- The spreadsheet remains as a blueprint of possible (future) collaborations
 - ↳ quick, low-cost and cost-efficient way to identify common research interests
- Subject specific subgroups open to all linked researcher(s) fields attract researchers

Lessons learnt

- It is not imperative for all PU's to participate to all FG's
- The success largely depends on two factors:
 - a strongly motivated researcher taking the lead
 - an RMA supporting the researcher by organising the subgroup

Success – outcomes

- In 10 months already 3 HE proposal consortia
- Joint research and education collaborations
- Joint international workshops

Thematic subgroups of specialists

